

Delay column for PFAS Care and Use Manual

Introduction

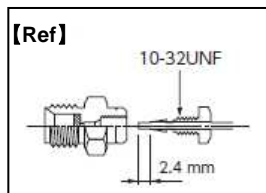
Thank you for purchasing the Delay column for PFAS. This column removes impurities in the eluent in advance. Mainly, in the LC / MS analysis of PFAS (Per- and Polyfluoroalkyl Substances), by strongly retaining the PFAS component eluted from PTFE in the LC system, the influence of the LC system-derived contaminant peak in the PFAS analysis can be suppressed. Before using the product, read this instruction manual carefully and use it correctly.

1. Checking contents

Please check the appearance and packaging of this product for any abnormalities. Check if there are any errors in Cat. No., product name, number of parts, etc. If there is any abnormality such as column appearance, please contact us immediately.

2. Specifications

- Maximum operating pressure : 80 MPa
- Packing material : High purity Active carbon
- Connection
 - End-fitting type : UP type (tube tip length: 2.4 mm)
 - Connection tube : 1/16 inch O.D.
 - Screw standard : No.10-32UNF



3. Handling

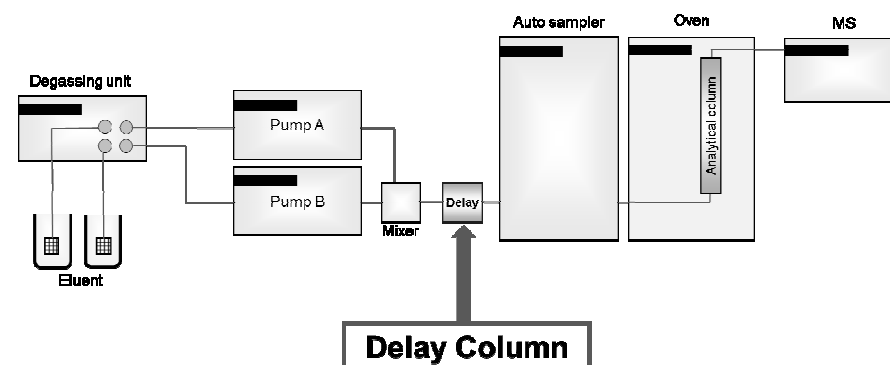
- Do not use with pressure exceeding the recommended maximum pressure; otherwise the column may deteriorate.
- In case of a gradient analysis, impurities in the eluent may be concentrated on this column and it may cause of large blank peaks detection. When performing continuous analysis with a gradient mode, it is recommended to run only the program the first time, and then perform main analysis from the second time on.
- It is recommended to replace this product approximately once a year from the start of use. If the performance deteriorates or usage period beyond a year, replace it with new Delay column.

4. Connection Procedure

The procedure for connecting the column is described below. Connect it by referring to the How to Install.

- 1) Connect the Delay column between the pump and the Autosampler or injector (see How to Install.)
(It is not a guard column, so do not attach it after the injector)
- 2) Methanol is enclosed in a Delay column. It is necessary to replace it with mobile phase enough before attaching an analytical column.
- 3) Attach the analytical column and confirm that the baseline is stable before performing analysis.

【How to Install】



5. Storing

- When the product is not going to be used for a long time, wash it sufficiently using acetonitrile or methanol that does not contain any salt.
- Store the product in a clean and dark place with small temperature variations.

Delay column for PFAS is are manufactured, inspected, packaged and shipped under strict standards of quality control. Should you find any defect in performance, please contact your GL Sciences' supplier, who will ensure you complete satisfaction. We regret that GL Sciences cannot guarantee the lifetime of columns, nor can we accept any claim when their performance has deteriorated due to non-compliance with the above operating manual or as a result of normal aging.

GL Sciences Inc.

22-1 Nishishinjuku 6-chome, Shinjuku-ku,
Tokyo 163-1130, Japan
Tel. +81-3-5323-6620 Fax. +81-3-5323-6621
http://www.glsciences.com
E-mail: world@gls.co.jp

Rev. 1-0